

2013

Newcastle University

Dr. Gaetano Elia

INSTALLING EERA ON YOUR PC

[EERA is a computer program for Equivalent-linear Earthquake site Response Analyses of Layered Soil Deposits, developed by Bardet *et al.* (2000). It is a simple add-in of Microsoft Excel and works for both Office 2003 and Office 2007.]

EERA – INSTALLATION PROCEDURE for Office 2010

1. Copy the folder EERA on the Desktop
2. Open the folder EERA
3. Copy the 3 files **Dforrt.dll** ,**EERA.dll** , **EERA.xla**
4. Paste the 3 files in the folder: *C:\Users\“your username”\AppData\Microsoft\AddIns **
* Note: if you cannot open the folder AppData, you have to change your “Folder Options...” in order to show the hidden files and folders.
5. You can delete the 3 files Dforrt.dll ,EERA.dll , EERA.xla from the folder EERA on your Desktop
6. Open the file **EERAM.xls** * from the folder EERA on your Desktop
* Note: EERAM.xls is an Excel spreadsheet specifically designed for EERA. You can modify it and save with a different name.
7. Go to “File” and press “Options”. Follow the procedure displayed below (Figures 1-3) to add-in the EERA.xla file in Excel:

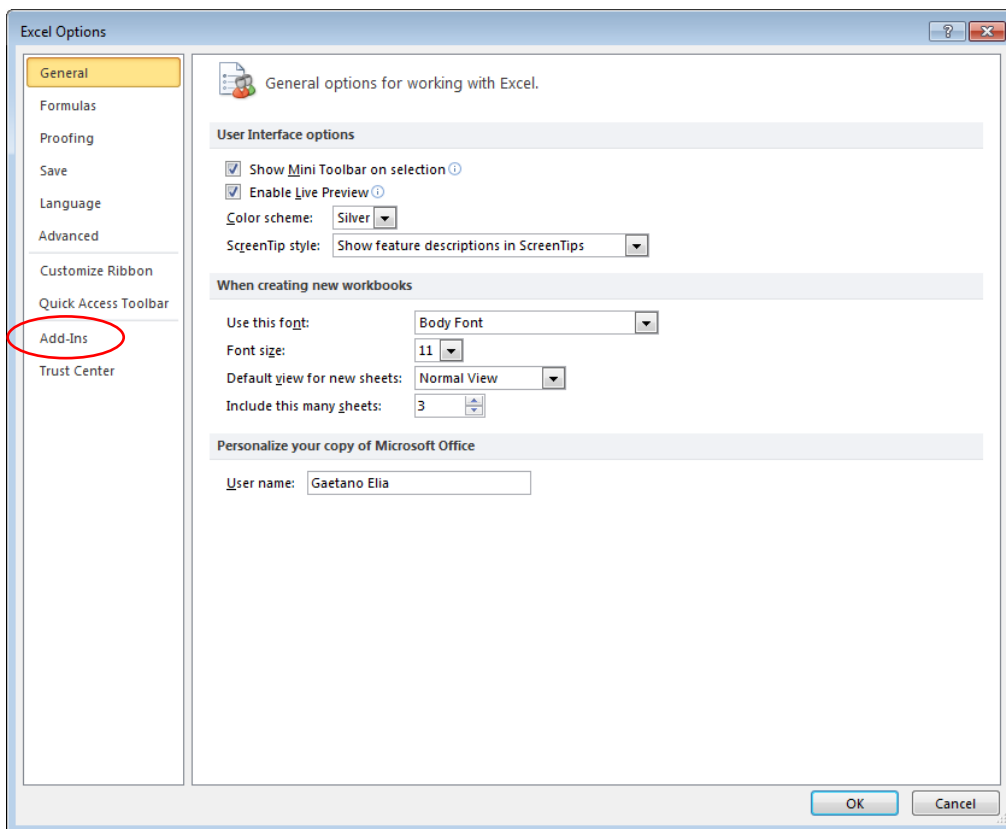


Figure 1

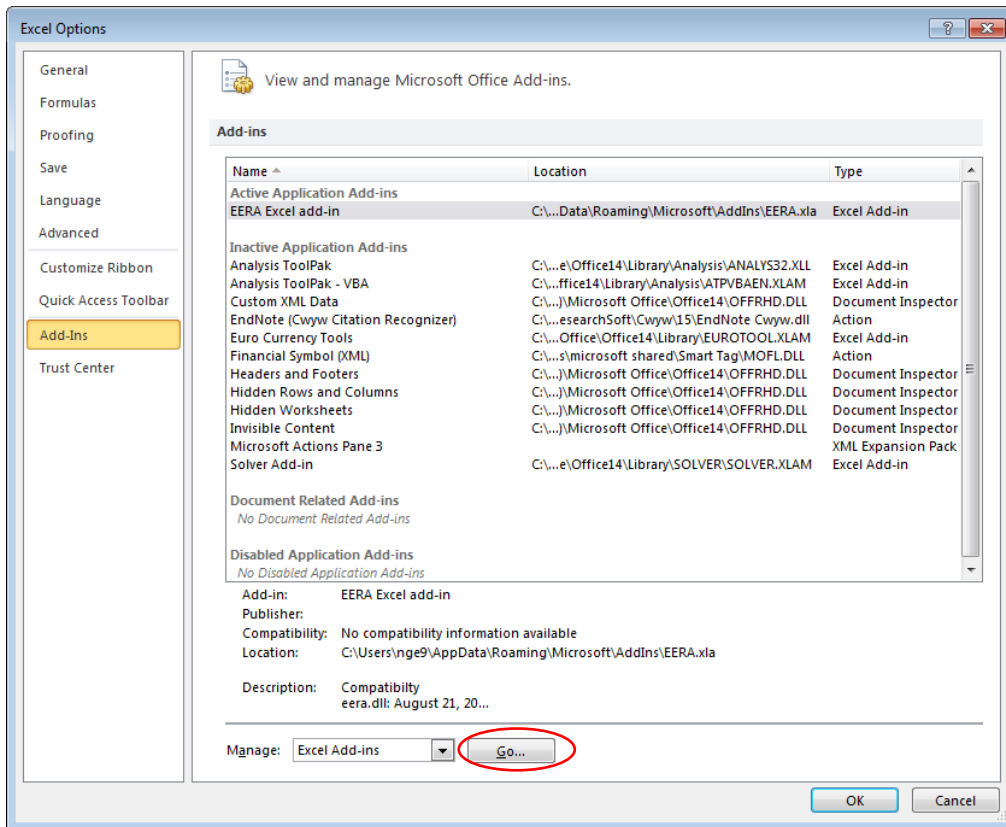


Figure 2

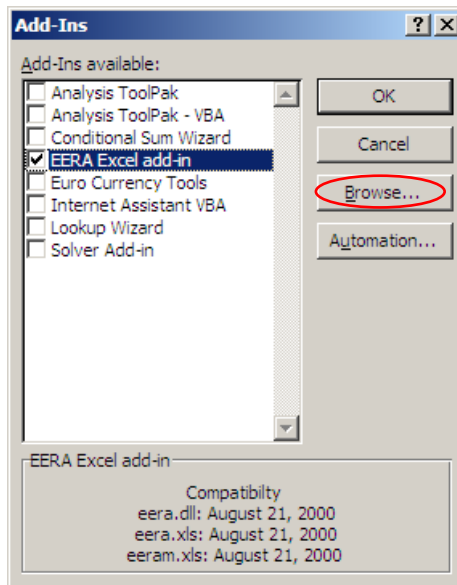


Figure 3

8. When you click "Browse" (Figure 3) the EERA.xla should appear and you have to select it and click OK. Do not move EERA.xla after installing it !
9. In the Tab named "Add-Ins" of your Excel program you should see the EERA button (Figure 4)

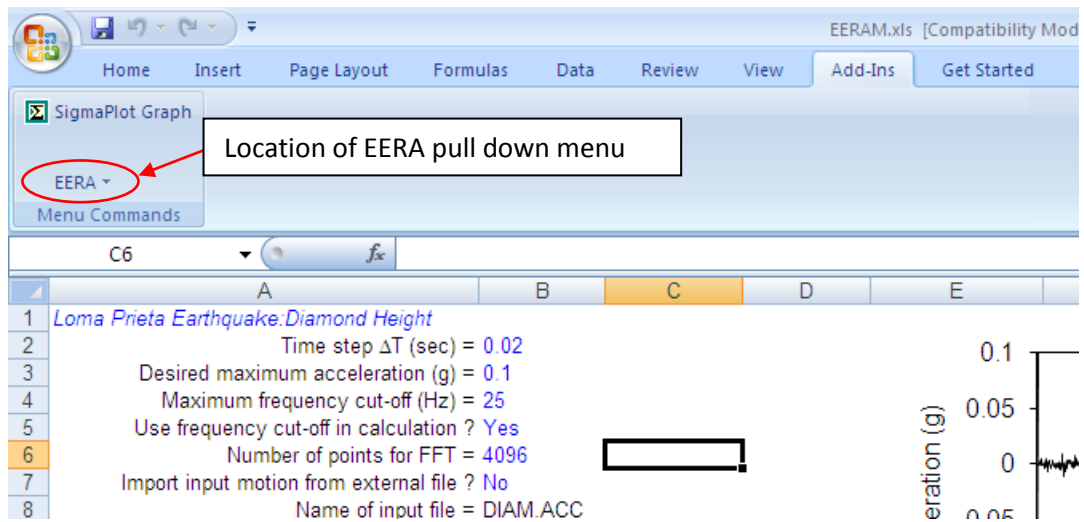


Figure 4

10. Now you can use EERA to process the data of EERAM.xls file

IMPORTANT: if you close Excel and then you want to re-use EERA, you must first remove the EERA Add-Ins from Excel (essentially repeating step 7) and then repeat the procedure from step 6 to 10, each time!