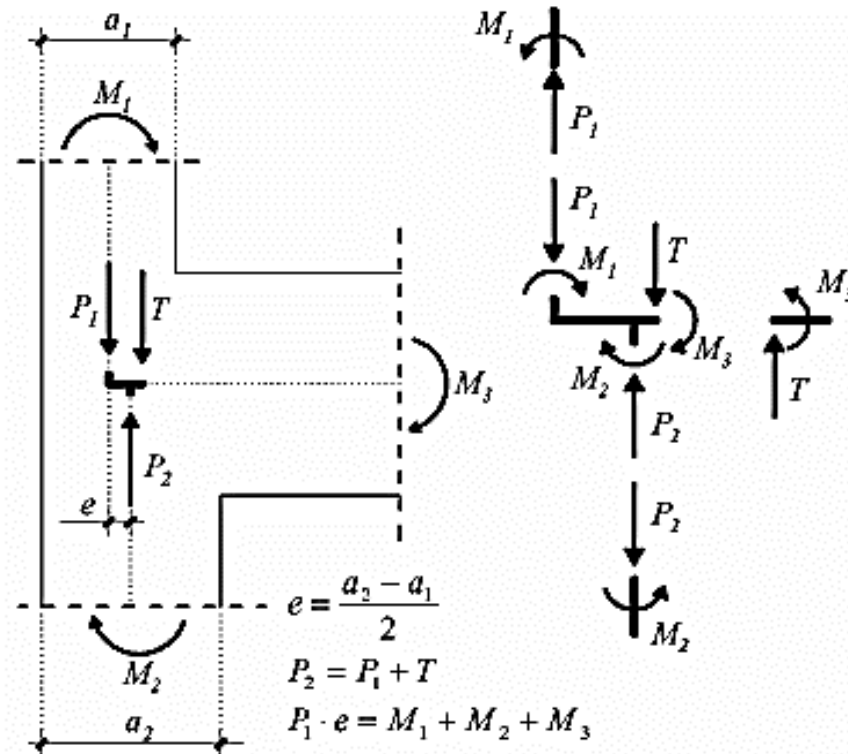


Le variazioni della sezione trasversale dei pilastri si effettuano mantenendo di preferenza costante una dimensione e variando l'altra con successivi incrementi, non superiori a 10 cm ciascuno.



PARTICOLARI COSTRUTTIVI PILASTRI

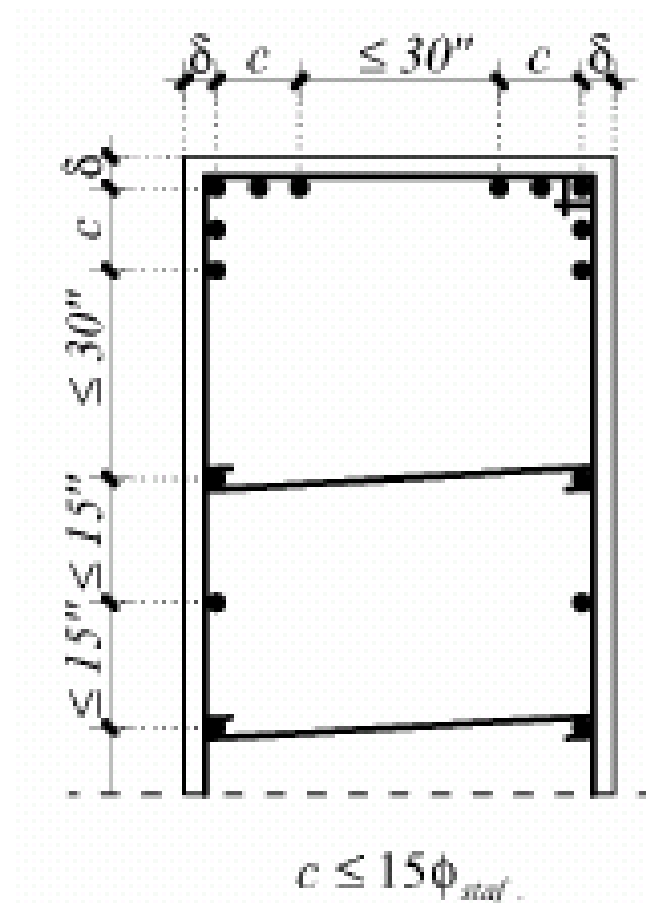
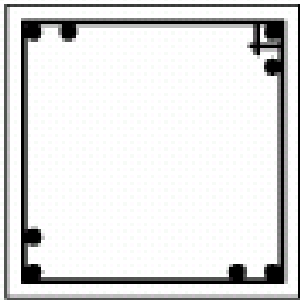
REGOLE PRATICHE PER LA DISPOSIZIONE DELLE ARMATURE

Le barre longitudinali si dispongono preferibilmente sugli spigoli del pilastro:

Max 5 barre per spigolo

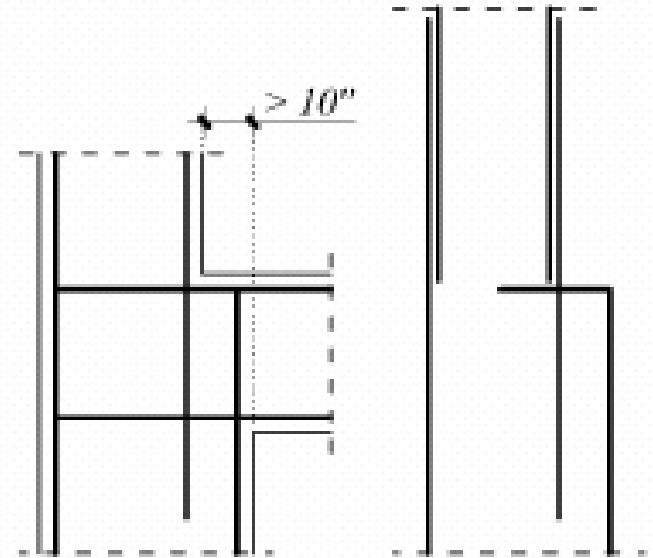
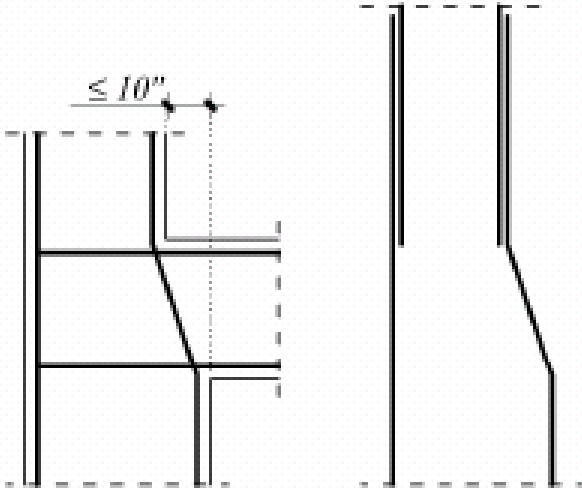
Interasse barre < 30 cm

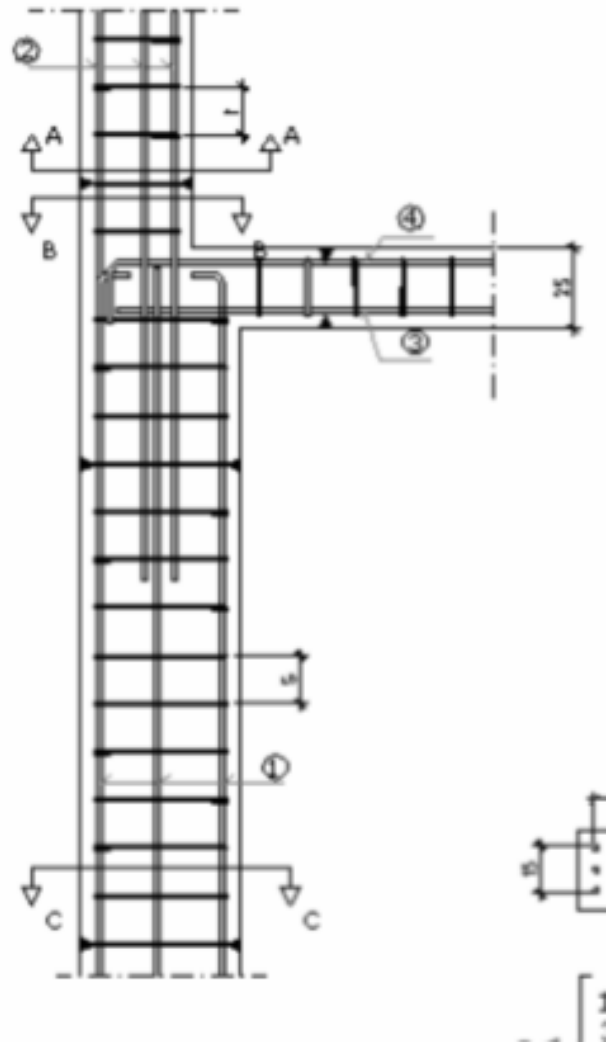
Ganci addizionali



PARTICOLARI COSTRUTTIVI PILASTRI

Variazioni verticali di sezione:

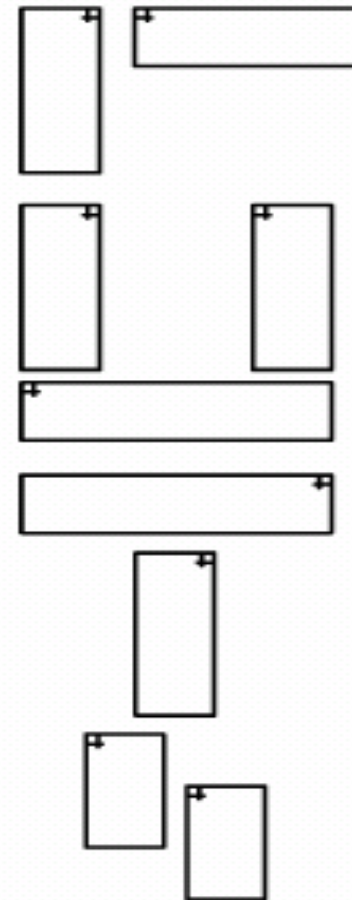
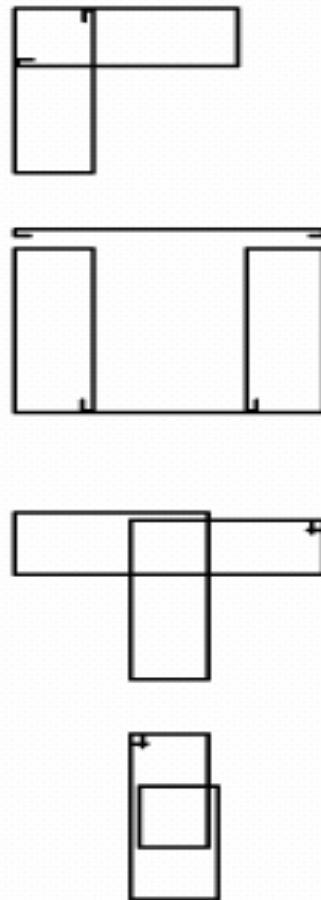
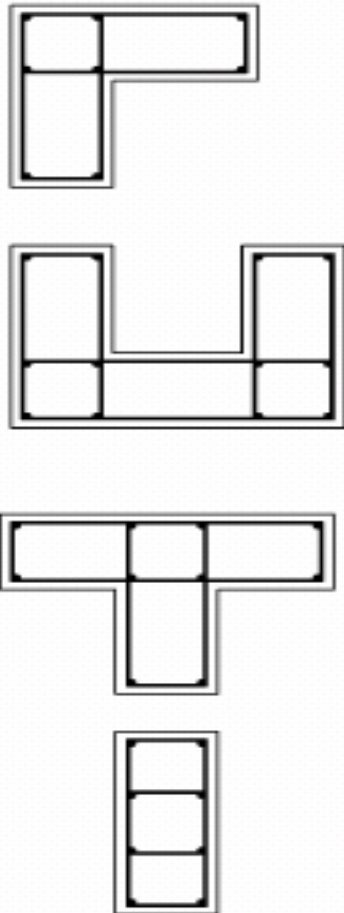


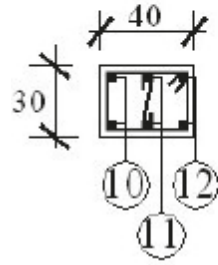


PARTICOLARI COSTRUTTIVI PILASTRI

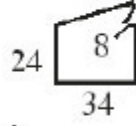
STAFFE SAGOMATE

STAFFE MULTIPLE

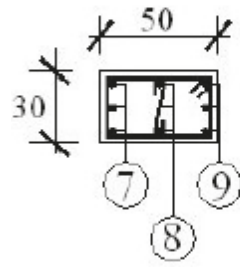




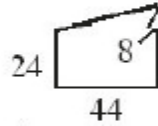
St. Ø8(140)



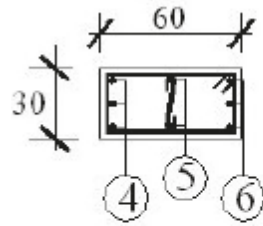
Spilli Ø6(46)



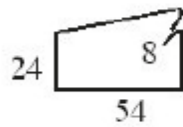
St. Ø8(160)



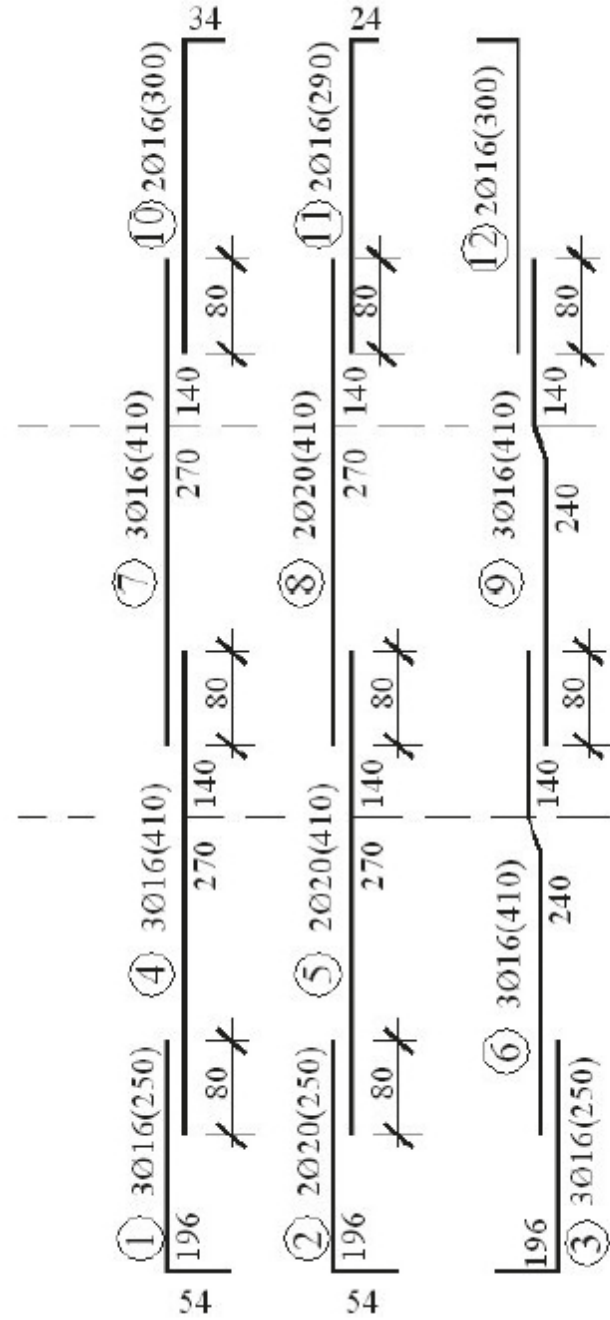
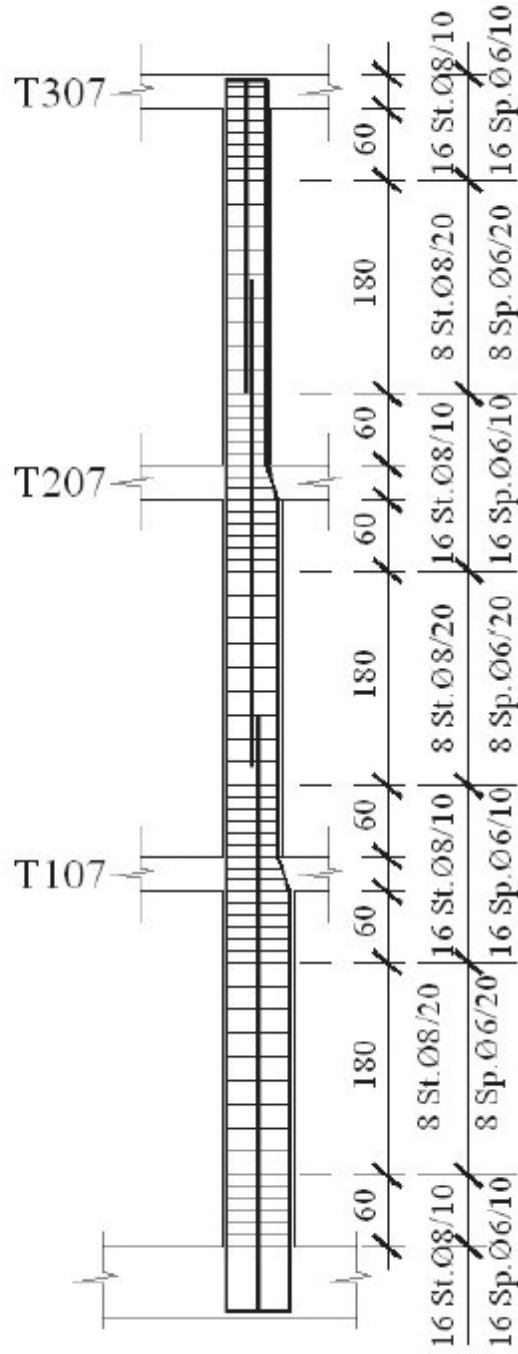
Spilli Ø6(46)



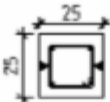
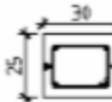
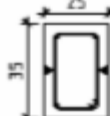
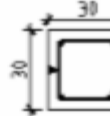
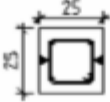
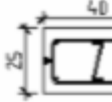

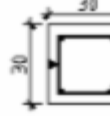
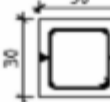
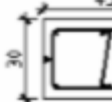

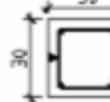
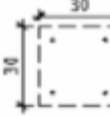


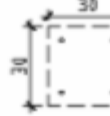
St. Ø8(180)



Spilli Ø6(46)



ABACO PILASTRI

PIANO 2°	 <p>4 ø 12 L=340 ST. ø8/20 L = 94 cod. 594</p>	 <p>4 ø 12 L=340 ST. ø8/20 L = 104 cod. 594</p>	 <p>4 ø 12 L=400 ST. ø8/21 L = 114 cod. 594</p>	 <p>4 ø 14 L=400 ST. ø8/21 L = 114 cod. 594</p>
PIANO 1°	 <p>4 ø 12 L=340 ST. ø8/20 L = 94 cod. 594</p>	 <p>6 ø 14 L=400 ST. ø8/21 L = 124+40 cod. 594 - 231</p>	 <p>6 ø 16 L=410 ST. ø8/24 L = 124+40 cod. 594 - 231</p>	 <p>4 ø 16 L=410 ST. ø8/24 L = 114 cod. 594</p>
PIANO T.	 <p>4 ø 16 L=410 ST. ø8/24 L = 114 cod. 594</p>	 <p>6 ø 16 L=410 ST. ø8/24 L = 144+40 cod. 594 - 231</p>	 <p>6 ø 20 L=420 ST. ø8/25 L = 144+40 cod. 594 - 231</p>	 <p>4 ø 20 L=420 ST. ø6/25 L = 114 cod. 594</p>
FONDAZIONI	 <p>4 ø 16 L'=170</p>	 <p>6 ø 16 L'=170</p>	 <p>6 ø 20 L'=190</p>	 <p>4 ø 20 L'=190</p>