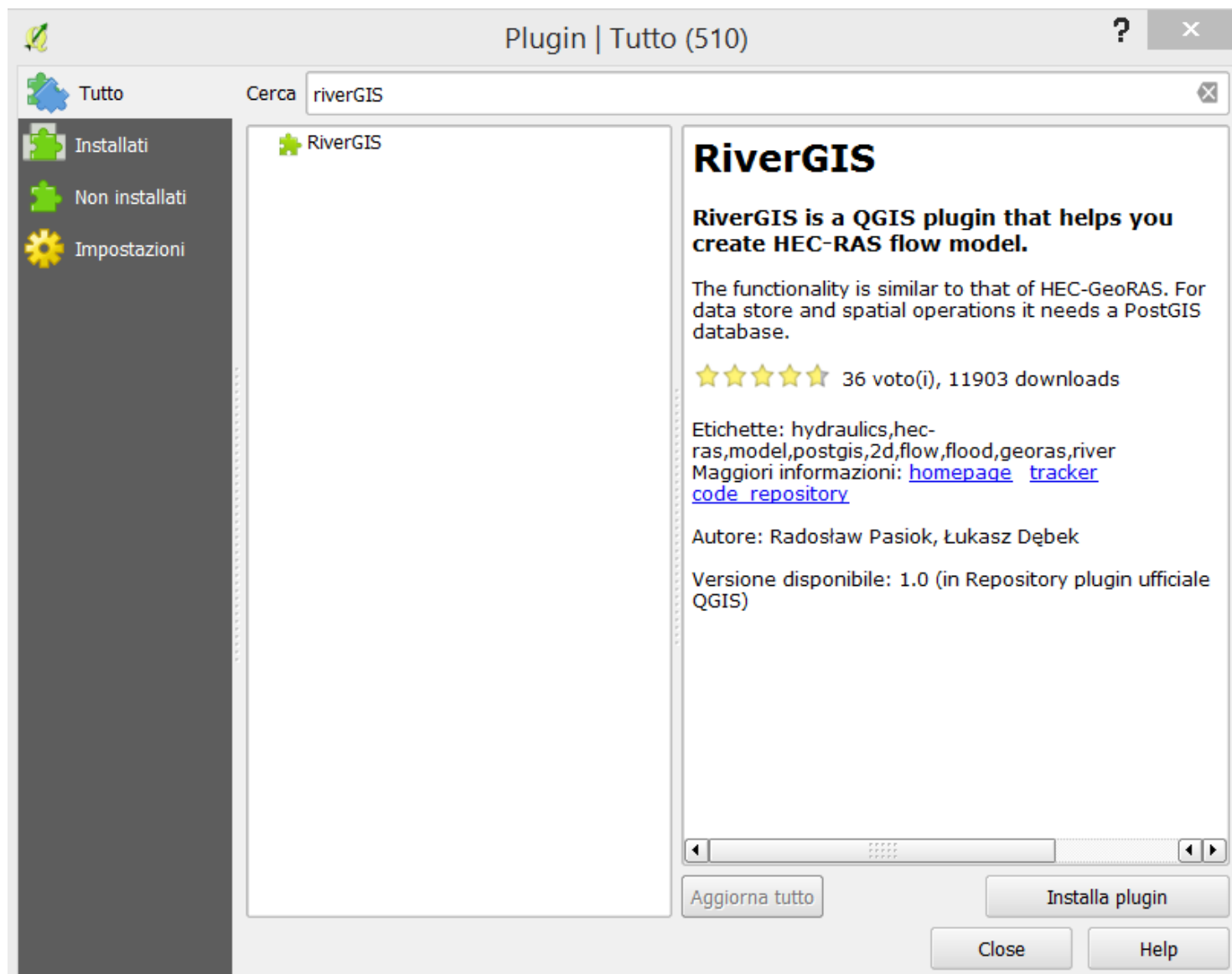


RiverGIS

<http://rivergis.com/>



The screenshot shows the QGIS Plugin Manager window titled "Plugin | Tutto (510)". The search bar contains "riverGIS". The left sidebar has three categories: "Tutto" (selected), "Installati", "Non installati", and "Impostazioni". The main area displays the "RiverGIS" plugin. The right panel provides detailed information about the plugin.

RiverGIS

RiverGIS is a QGIS plugin that helps you create HEC-RAS flow model.

The functionality is similar to that of HEC-GeoRAS. For data store and spatial operations it needs a PostGIS database.

★★★★☆ 36 voto(i), 11903 downloads

Etichette: hydraulics,hec-ras,model,postgis,2d,flow,flood,georas,river
Maggiori informazioni: [homepage](#) [tracker](#) [code repository](#)

Autore: Radosław Pasiok, Łukasz Dębek

Versione disponibile: 1.0 (in Repository plugin ufficiale QGIS)

Buttons: "Aggiorna tutto", "Installa plugin", "Close", "Help"

RiverGIS

Requirements:

The Database

<http://www.enterprisedb.com/products-services-training/pgdownload#windows>

During the installation you will be asked for database superuser (postgres) password – remember it well. Choose the default port for connections (5432). In the end the installer offers a Stack Builder for installing additional tools. Please, skip it.

PostgreSQL 9.3.19

Windows x86-64

DOWNLOAD NOW

Please note: Cookies should be enabled for the download process to function properly

Supported Platforms



Requirements:

The Database

<http://www.enterprisedb.com/products-services-training/pgdownload#windows>

PostgreSQL Configuration

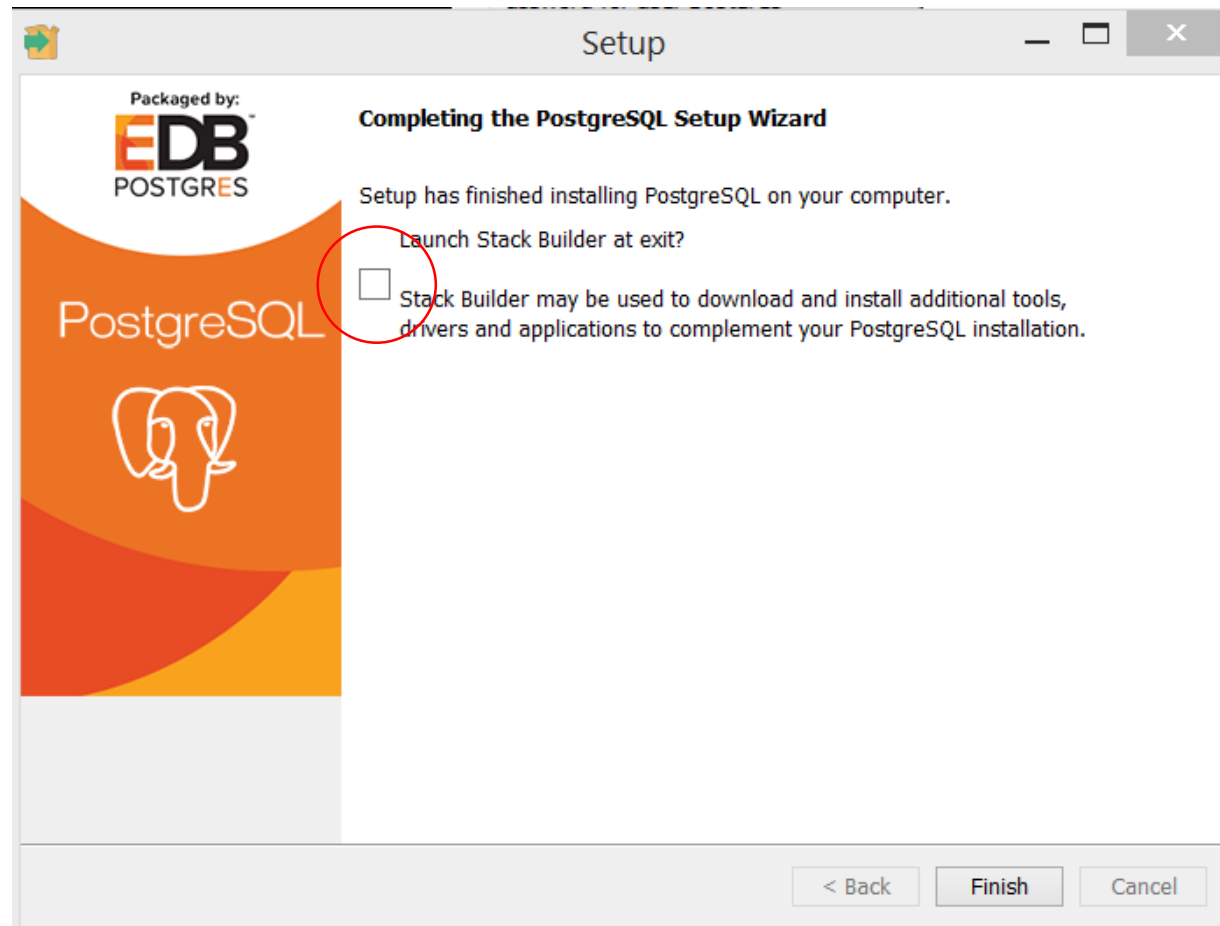
The image displays two sequential screenshots of the PostgreSQL Setup wizard. The top window, titled "Setup", is in the "Password" step. It contains the instruction "Please provide a password for the database superuser (postgres)." and two input fields: "Password" and "Retype password", both containing four black dots. A green arrow icon is visible in the top right corner of the window. The bottom window, also titled "Setup", is in the "Port" step. It contains the instruction "Please select the port number the server should listen on." and a "Port" input field with the value "5432". A green arrow icon is also visible in the top right corner of this window.

Requirements:

The Database

<http://www.enterprisedb.com/products-services-training/pgdownload#windows>

PostgreSQL Configuration



RiverGIS

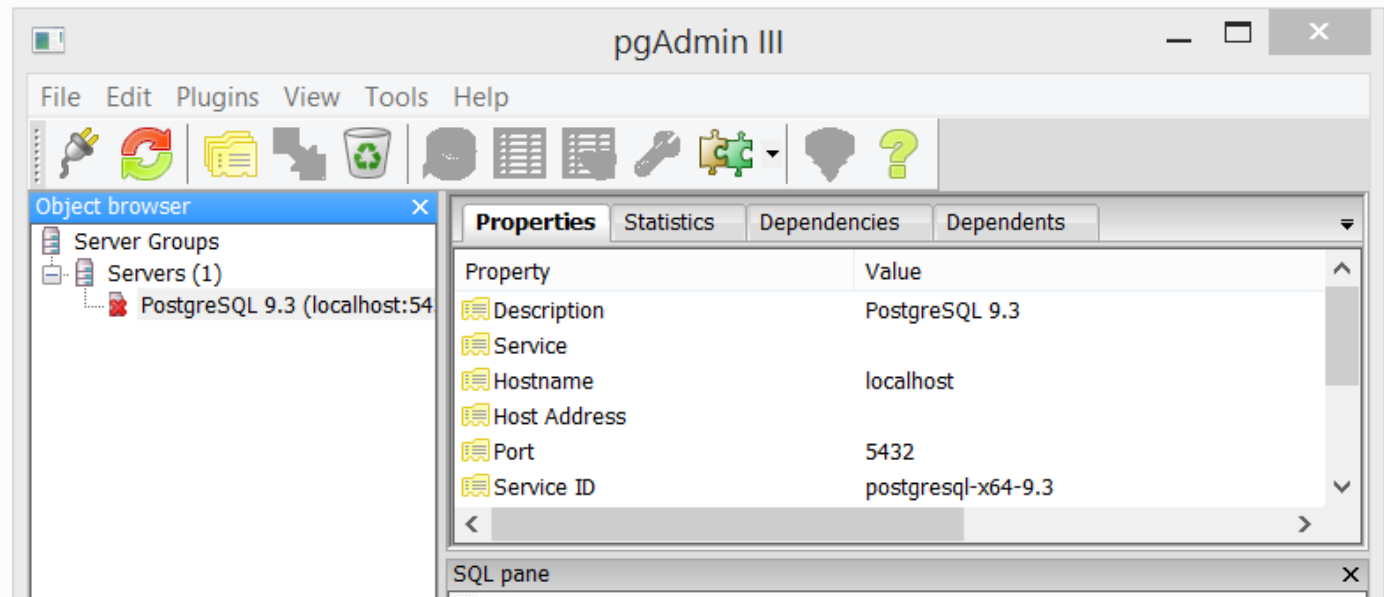
Requirements:

The Database

<http://www.enterprisedb.com/products-services-training/pgdownload#windows>

PostgreSQL Configuration

Run `pgAdmin` and connect to server. If you have just installed `PostgreSQL`, localhost:5432 is the only option.



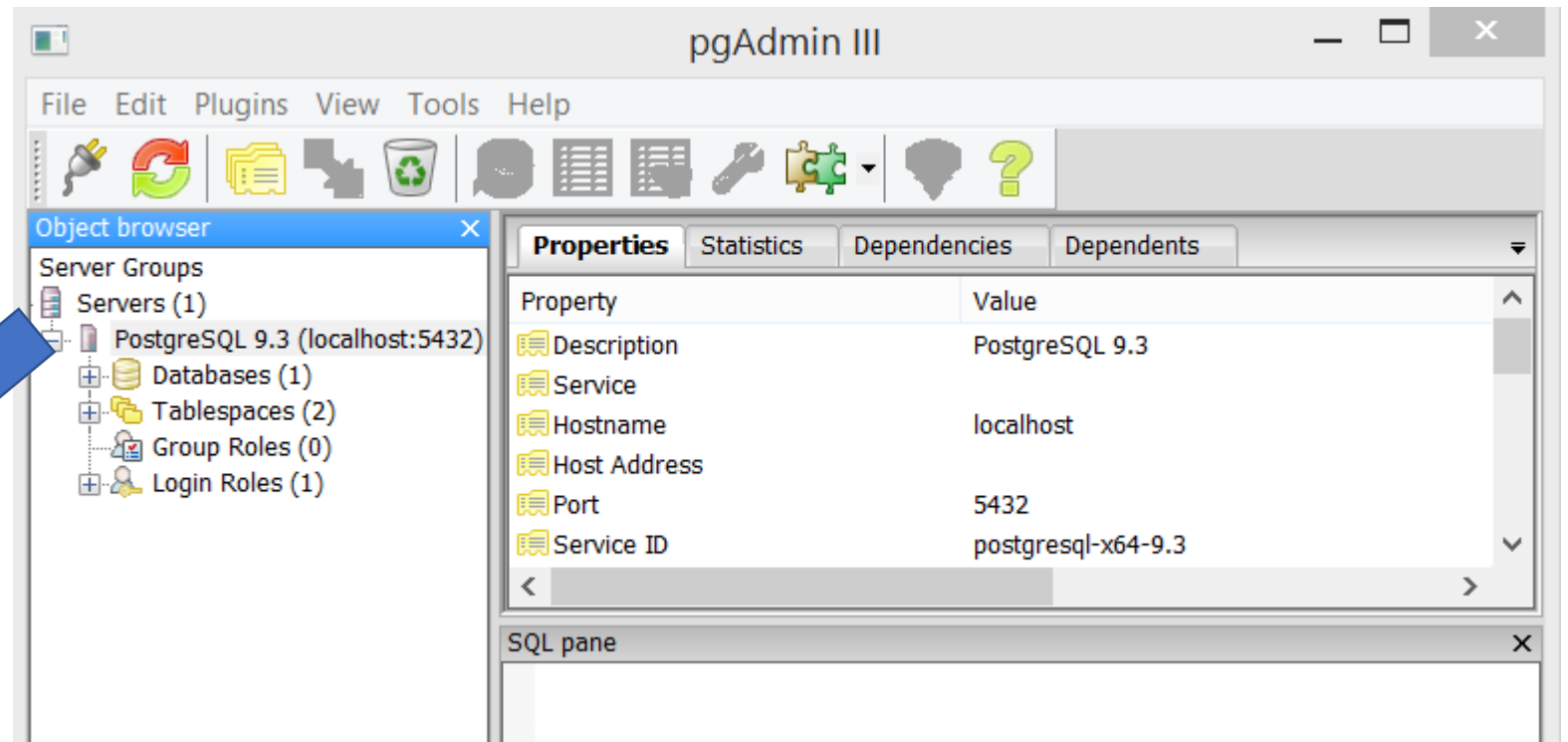
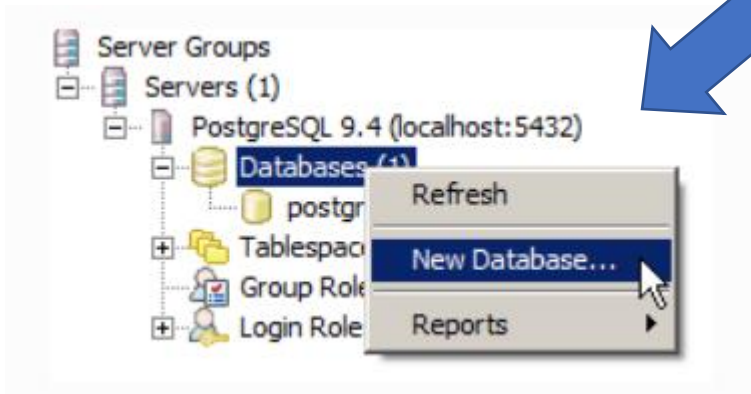
RiverGIS

Requirements:

The Database

<http://www.enterprisedb.com/products-services-training/pgdownload#windows>

PostgreSQL Configuration



pgAdmin ,

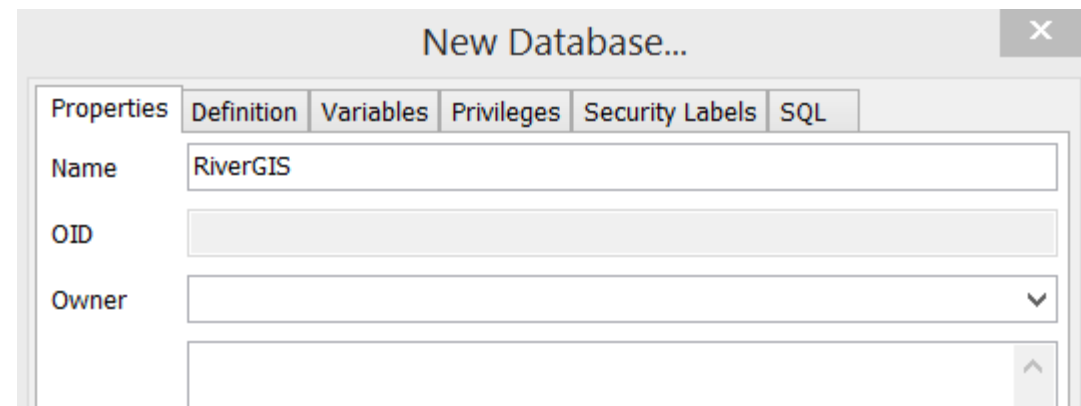
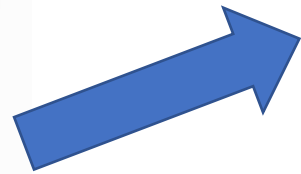
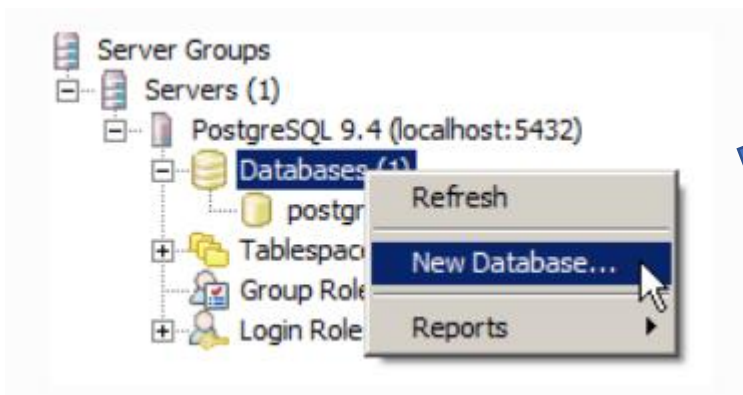
RiverGIS

Requirements:

The Database

<http://www.enterprisedb.com/products-services-training/pgdownload#windows>

PostgreSQL Configuration



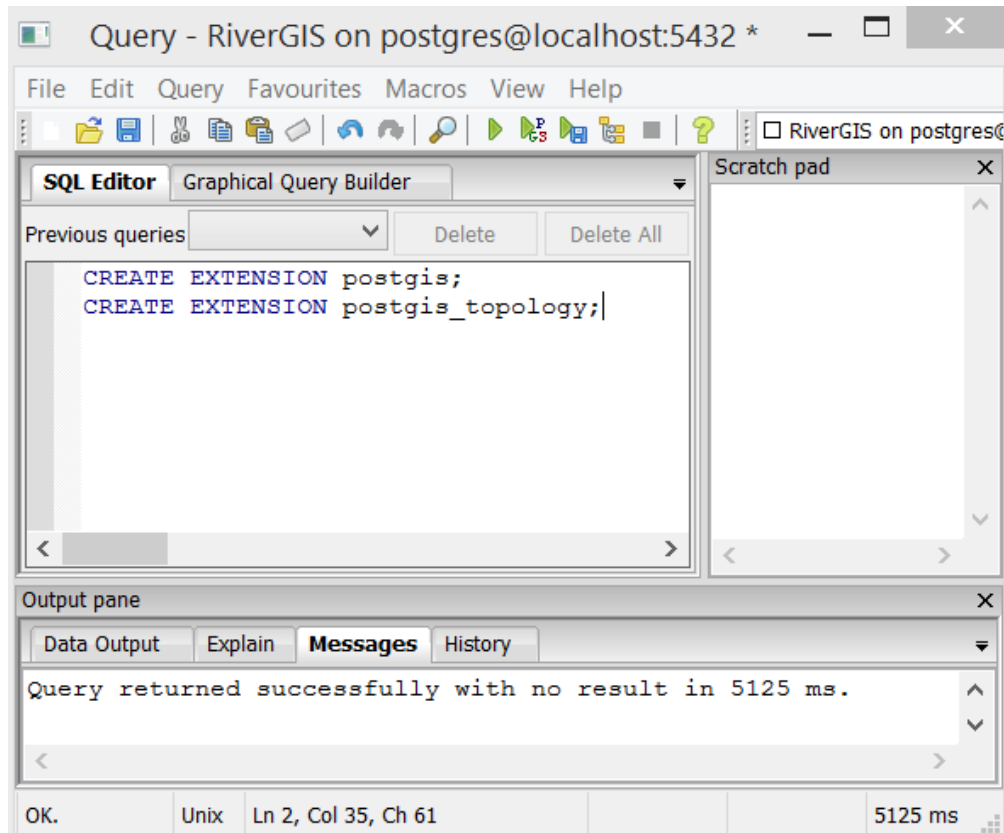
RiverGIS

Requirements:

The Database

<http://www.enterprisedb.com/products-services-training/pgdownload#windows>

PostgreSQL Configuration



Query - RiverGIS on postgres@localhost:5432 *

File Edit Query Favourites Macros View Help

SQL Editor Graphical Query Builder

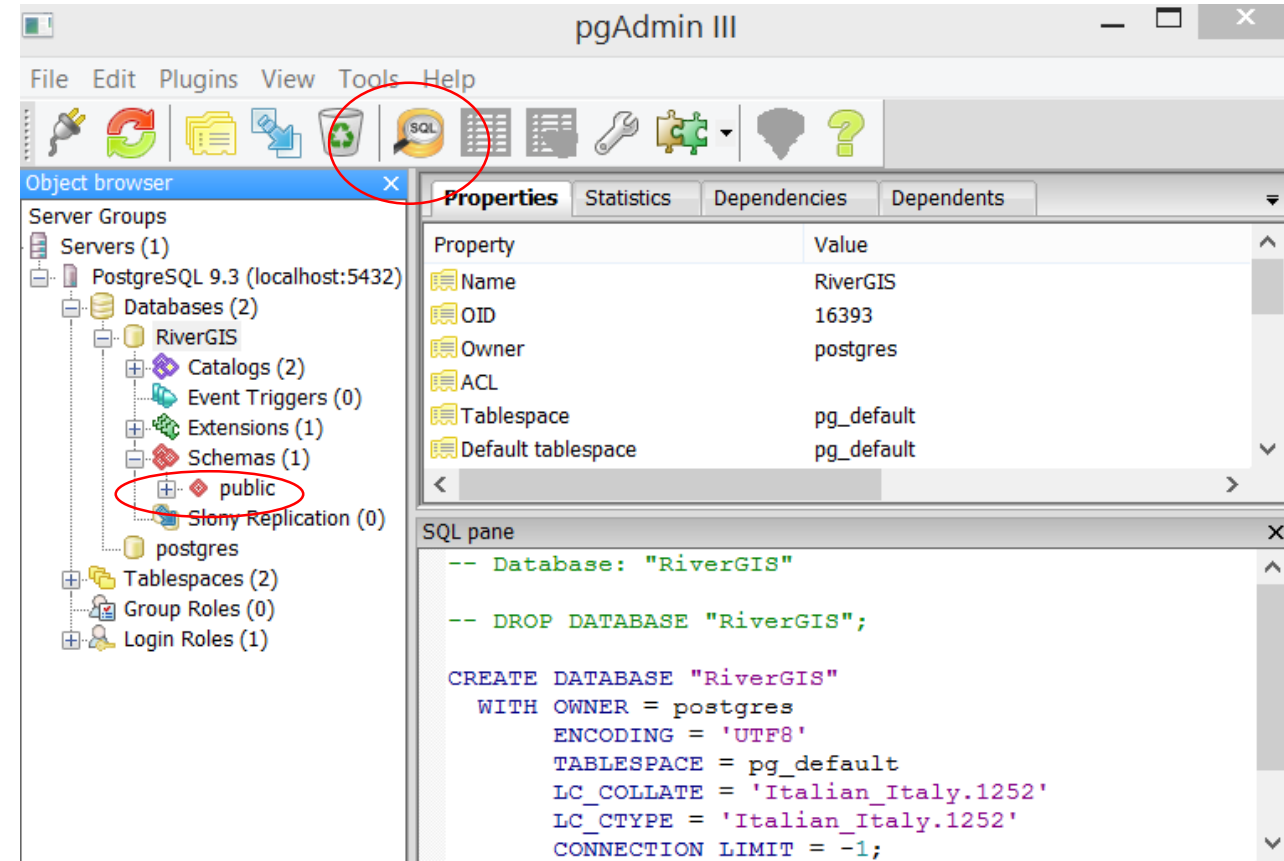
```
CREATE EXTENSION postgis;  
CREATE EXTENSION postgis_topology;
```

Output pane

Data Output Explain Messages History

Query returned successfully with no result in 5125 ms.

OK. Unix Ln 2, Col 35, Ch 61 5125 ms



pgAdmin III

File Edit Plugins View Tools Help

Object browser

- Server Groups
 - Servers (1)
 - PostgreSQL 9.3 (localhost:5432)
 - Databases (2)
 - RiverGIS
 - Catalogs (2)
 - Event Triggers (0)
 - Extensions (1)
 - Schemas (1)
 - public
 - Slony Replication (0)
 - postgres
 - Tablespaces (2)
 - Group Roles (0)
 - Login Roles (1)

Properties

Property	Value
Name	RiverGIS
OID	16393
Owner	postgres
ACL	
Tablespace	pg_default
Default tablespace	pg_default

SQL pane

```
-- Database: "RiverGIS"  
  
-- DROP DATABASE "RiverGIS";  
  
CREATE DATABASE "RiverGIS"  
WITH OWNER = postgres  
ENCODING = 'UTF8'  
TABLESPACE = pg_default  
LC_COLLATE = 'Italian_Italy.1252'  
LC_CTYPE = 'Italian_Italy.1252'  
CONNECTION LIMIT = -1;
```


RiverGIS

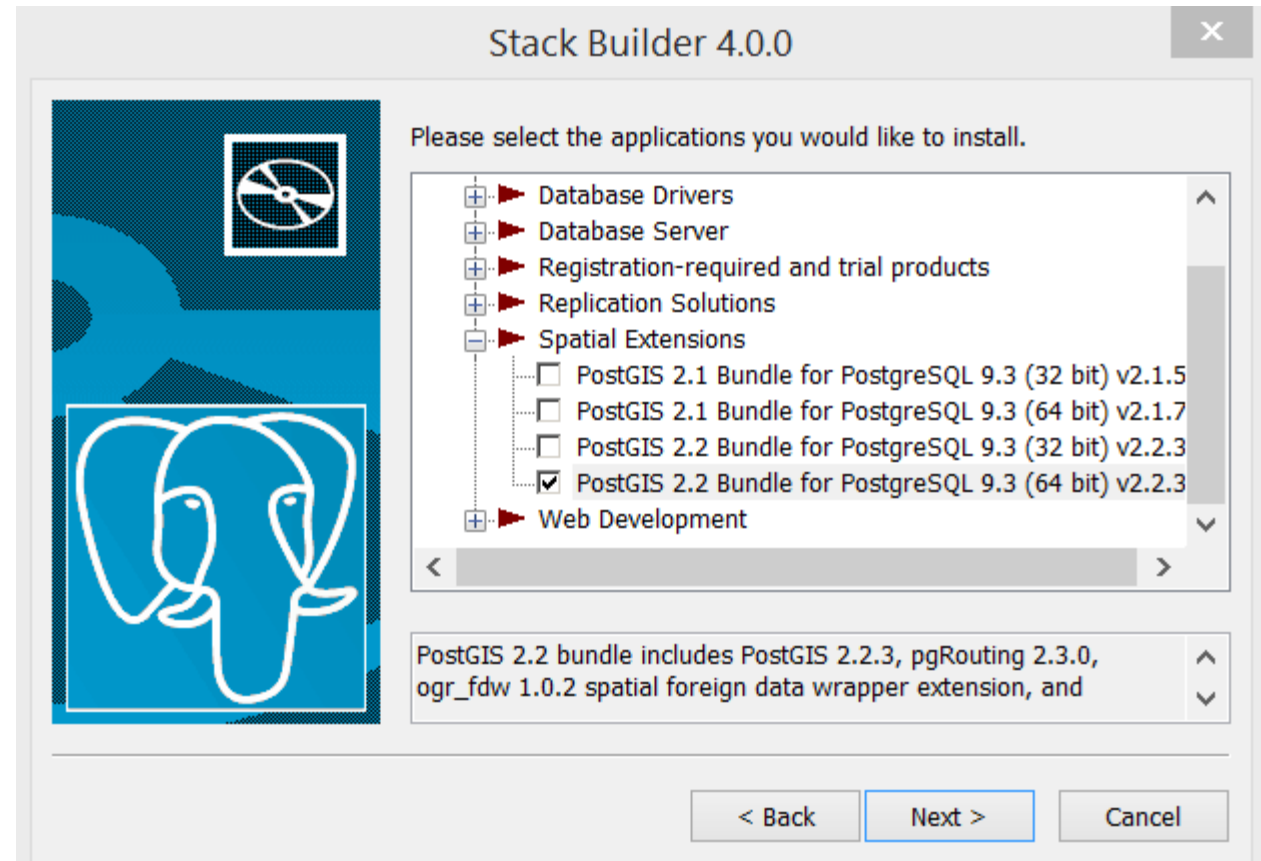
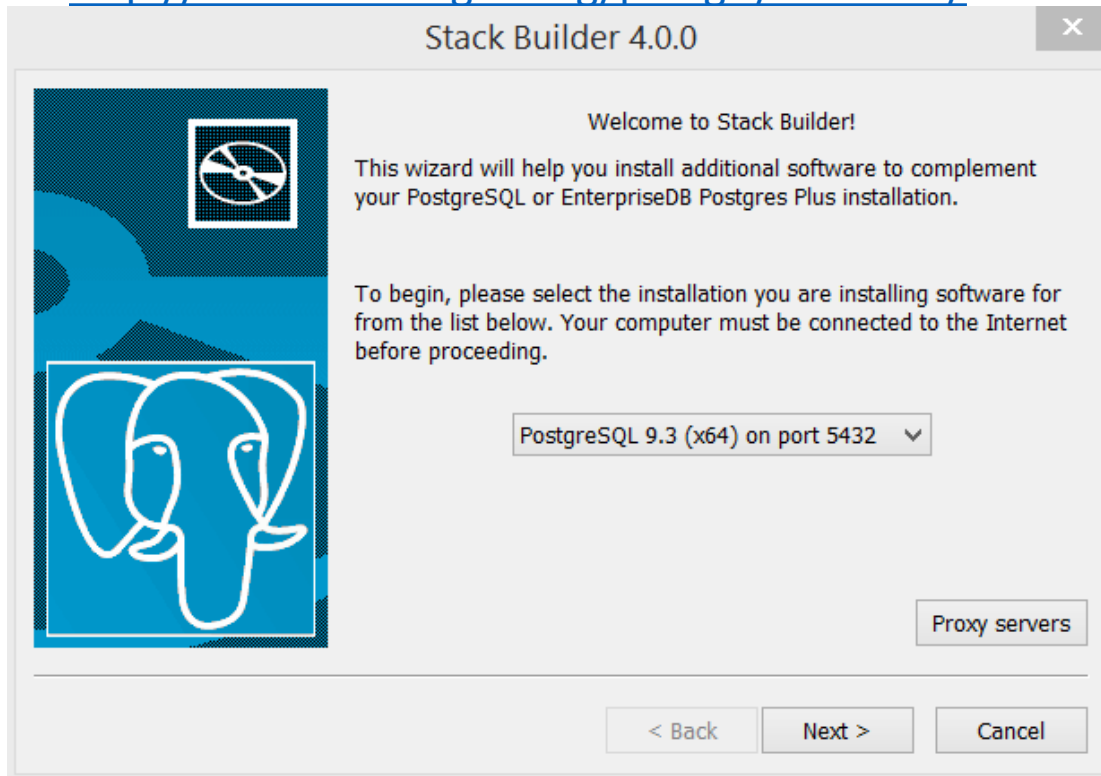
Requirements:

The Database

<http://www.enterprisedb.com/products-services-training/pgdownload#windows>

PostGIS

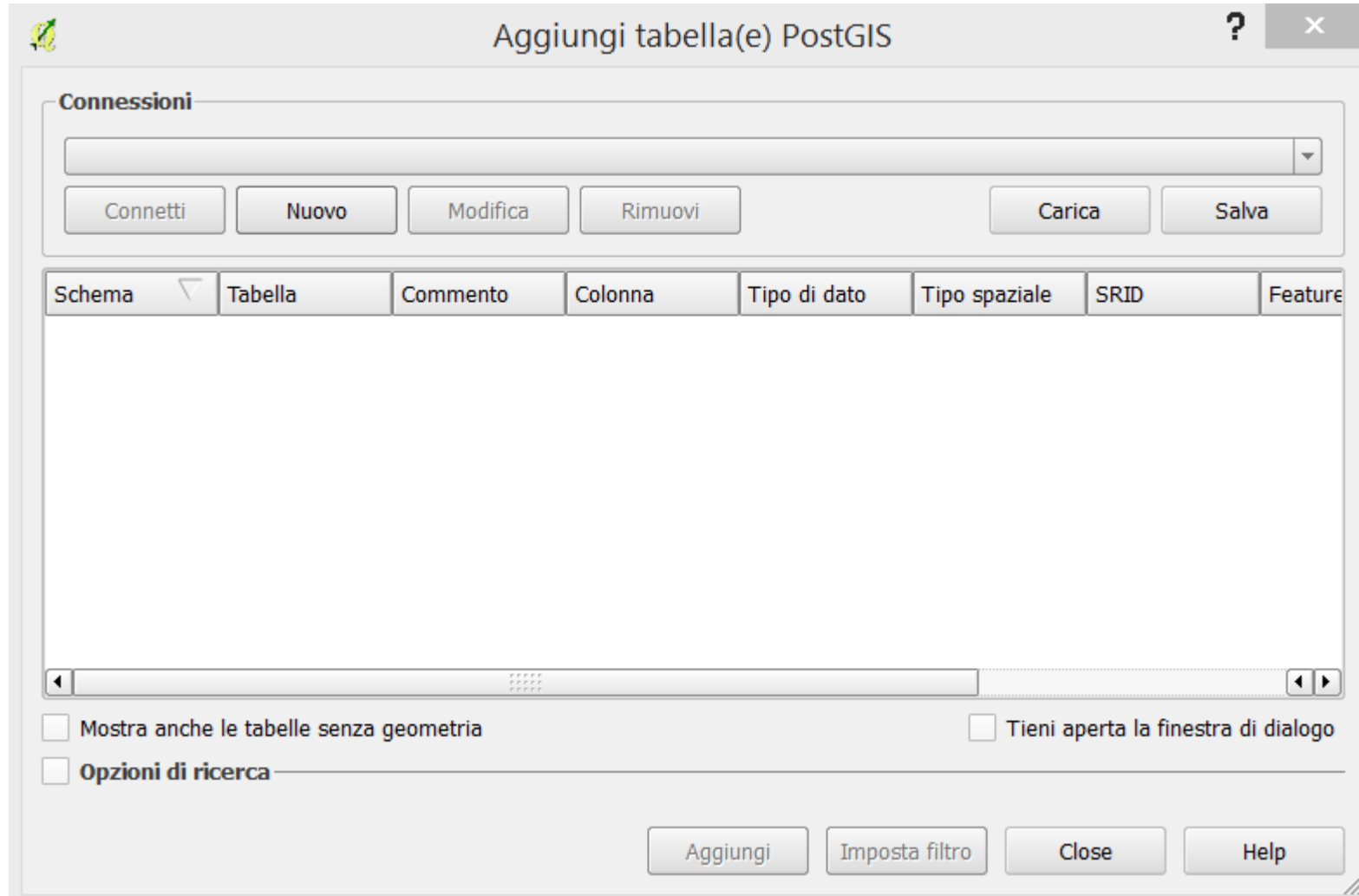
<http://download.osgeo.org/postgis/windows/>



RiverGIS

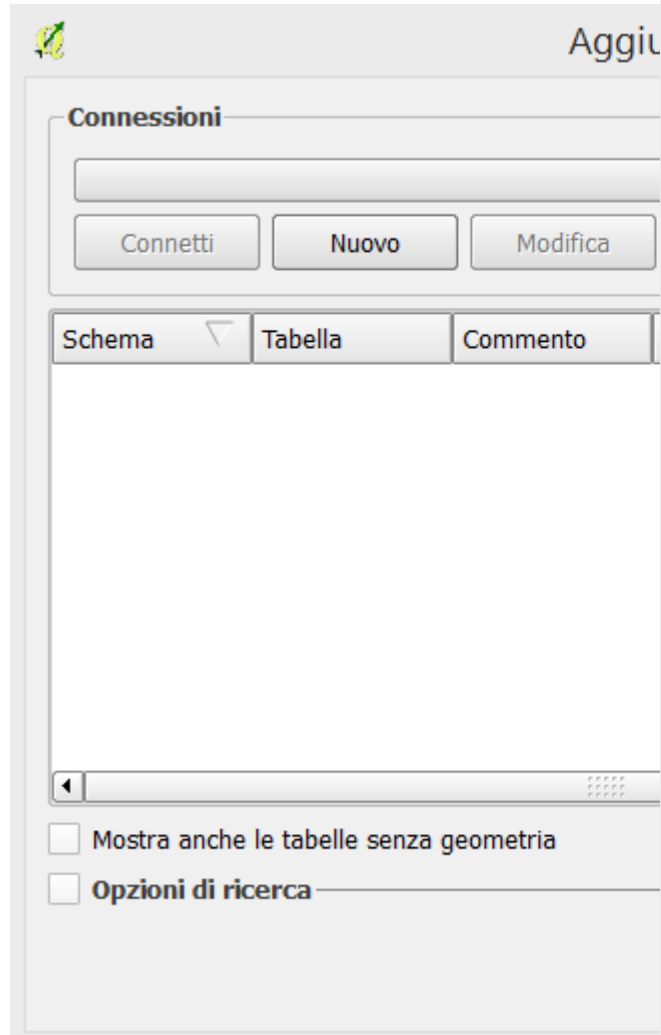
Define a new database connection in QGIS

Layer > Add layer > Add PostGIS Layers...



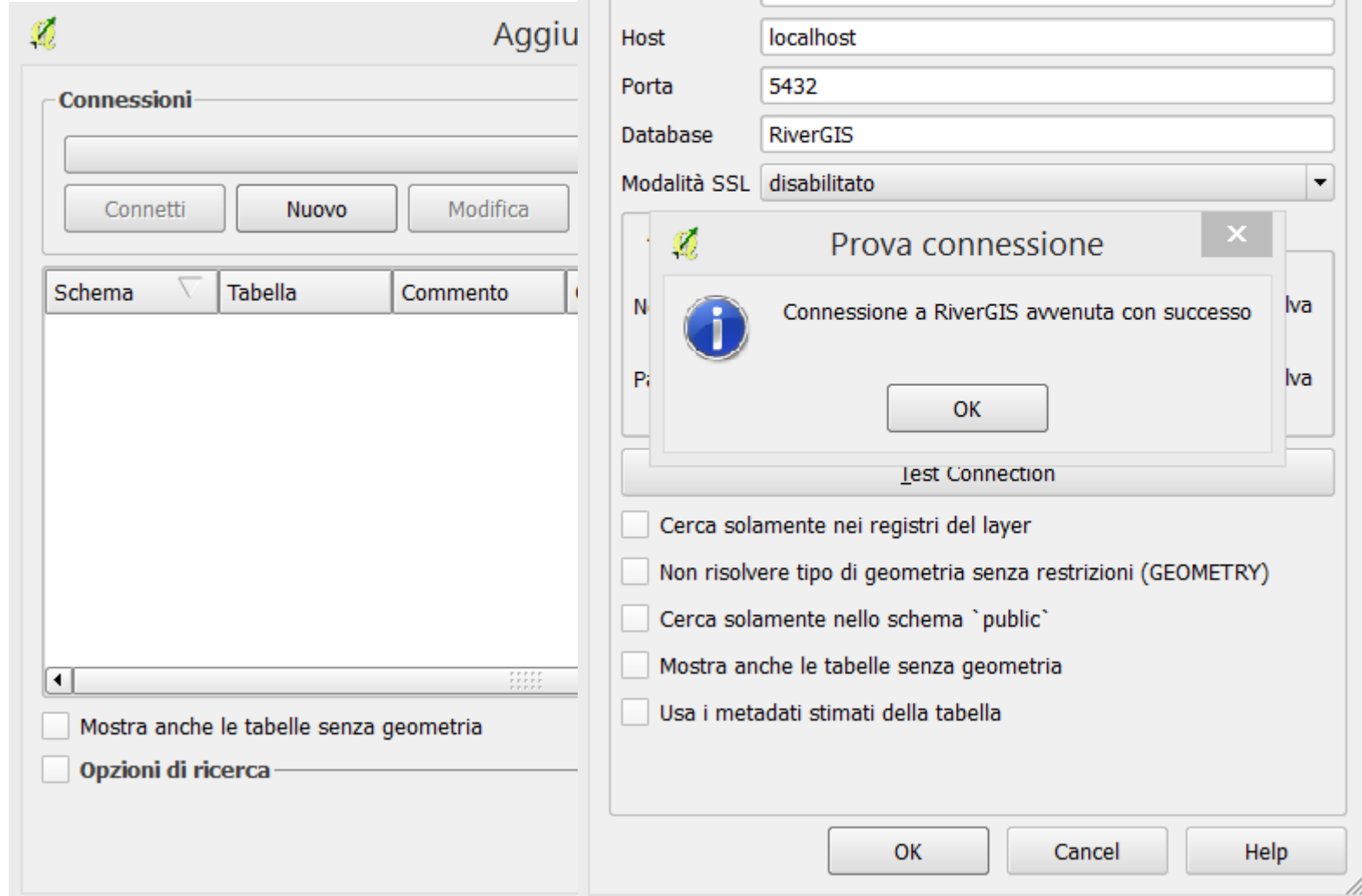
Define a new database connection in QGIS

Layer > Add layer > Add PostGIS Layers...



Define a new database connection in QGIS

Layer > Add layer > Add PostGIS Layers...



RiverGIS

